

2024-04-30

Developing a Research Skilled Workforce Strategy

Biddle, Carrie

Biddle, C. 'Developing a Research Skilled Workforce Strategy', South West Clinical Research Journal, 4, SE1

<https://pearl.plymouth.ac.uk/handle/10026.1/22338>

<https://doi.org/10.24382/c2va-1070>

University of Plymouth

All content in PEARL is protected by copyright law. Author manuscripts are made available in accordance with publisher policies. Please cite only the published version using the details provided on the item record or document. In the absence of an open licence (e.g. Creative Commons), permissions for further reuse of content should be sought from the publisher or author.

Developing a Research Skilled Workforce Strategy

Carrie Biddle¹

¹Regional Head of Allied Health Professions, Psychological Professions and Healthcare Scientists, NHS England South West, Workforce, Training & Education Directorate, Plumer House, PLYMOUTH, PL6 5HY, UK.

Email: carrie.biddle1@nhs.net

Submitted for publication: 19 March 2024

Accepted for publication: 20 March 2024

Published: 30 April 2024

Welcome to this special edition of the South West Clinical School Journal that celebrates our research active health, care and scientific professionals working across the region. The opportunity to submit an article for this special edition of the South West Clinical School Journal was offered to those showcasing their work at our regional [developing a research skilled workforce celebration conference](#) in November 2023. The research and service improvement projects shared provide just a snapshot of the research activities taking place in our wider south west region.

Background

In 2021 a short task and finish group of practitioners, leaders and academics from a range of professional backgrounds convened to create a 'plan on a page' and develop a research skilled workforce strategy for the South West region of England. The strategy (HEE, 2022) was launched in January 2023 and now engages registered allied health professionals (AHPs), dental care, optical, pharmacy and public health professionals, chiropractors, healthcare scientists, medical associate professionals (MAPs), midwives, nurses, nurse associates, registered psychological professionals and psychology practitioners, social workers, and clinical researcher practitioners, along with our valued support workforce and future workforce.

We are working with the University of Plymouth as our regional implementation partner, harnessing their skills and experience of delivering the South West Clinical School network to link research with practice to improve patient outcomes.

Research as a keystone to excellent care and innovation

The South West 'Plan on a Page' (Figure 1) represents our coproduced north star that will guide the right actions in the right places with research as a keystone that underpins excellent care and supports innovation.

The plan includes a framework to support implementation of six key aims (Figure 1).

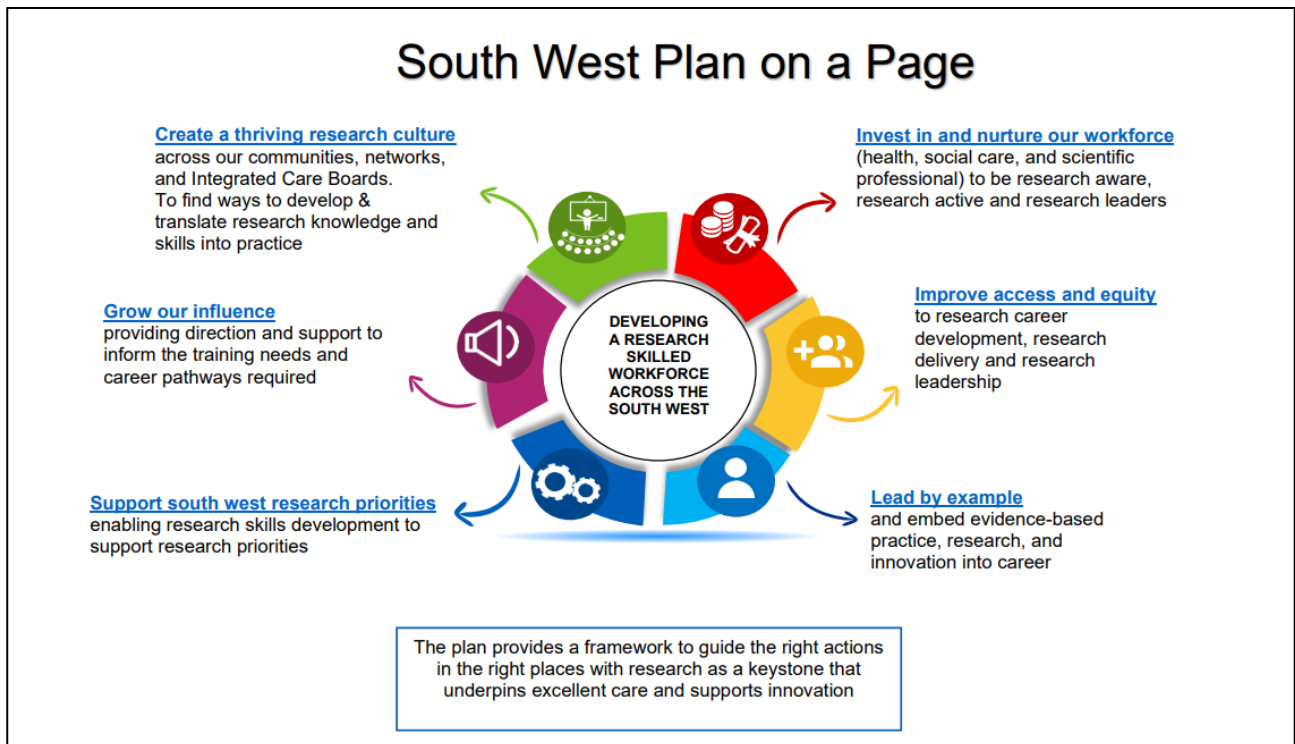


Figure1: Developing a Research Skilled Workforce Strategy Plan on a Page

Celebrating Research in the South West

The Faculty of Health at the University of Plymouth delivered an excellent regional developing a research skilled workforce showcase, celebration, and networking conference last November. There was an incredible range of oral and poster presentations shared on the day. These are available to view and download from their [website](#).

This Journal provides an impactful platform to provide further opportunities for colleagues to share their research and service improvements with pride, to develop academic writing skills for publication and to inspire others. This special edition includes contributions from a diverse range of clinical academic work, from people at different stages of their research career development. This work and the publication directly support the delivery of our strategy, showcasing success of research led by health, social care, and scientific professions.

As you will soon discover these professionals want to be part of a research active workforce in our region. They want to help fill knowledge gaps and continue to ask curious questions. This will ensure the evidence base on which we practice and deliver health and

care within our local communities, to enable people to live well and improve health outcomes, is at the cutting edge of world leading science, technology, and innovation.

References

Health Education England. (2022) *Developing and research skilled workforce: South west strategic research workforce capacity and capability plan on a page*. Available at: https://d1fdloi71mui9q.cloudfront.net/Qc4Dm4NRvCrKlGgZ0Zy7_Developing%20a%20research%20skilled%20workforce%20south%20west%202023-2026.pdf (Accessed 17 March 2024)



This is an open access article distributed under the terms of the Creative Commons Attribution Non-Commercial 4.0 International (CC BY-NC-SA 4.0) licence (see <https://creativecommons.org/licenses/by-nc-sa/4.0/>) which permits others to copy and redistribute in any medium or format, remix, transform and on a non-commercial basis build on this work, provided appropriate credit is given. Changes made need to be indicated, and distribution must continue under this same licence.