

2023

An investigation into how tree characteristics and species composition associated with veteran and ancient trees influences invertebrate species

Clapp, B.

Clapp, B. (2023) 'An investigation into how tree characteristics and species composition associated with veteran and ancient trees influences invertebrate species', *The Plymouth Student Scientist*, 16(2), pp. 224-252.

<https://pearl.plymouth.ac.uk/handle/10026.1/21838>

The Plymouth Student Scientist
University of Plymouth

All content in PEARL is protected by copyright law. Author manuscripts are made available in accordance with publisher policies. Please cite only the published version using the details provided on the item record or document. In the absence of an open licence (e.g. Creative Commons), permissions for further reuse of content should be sought from the publisher or author.

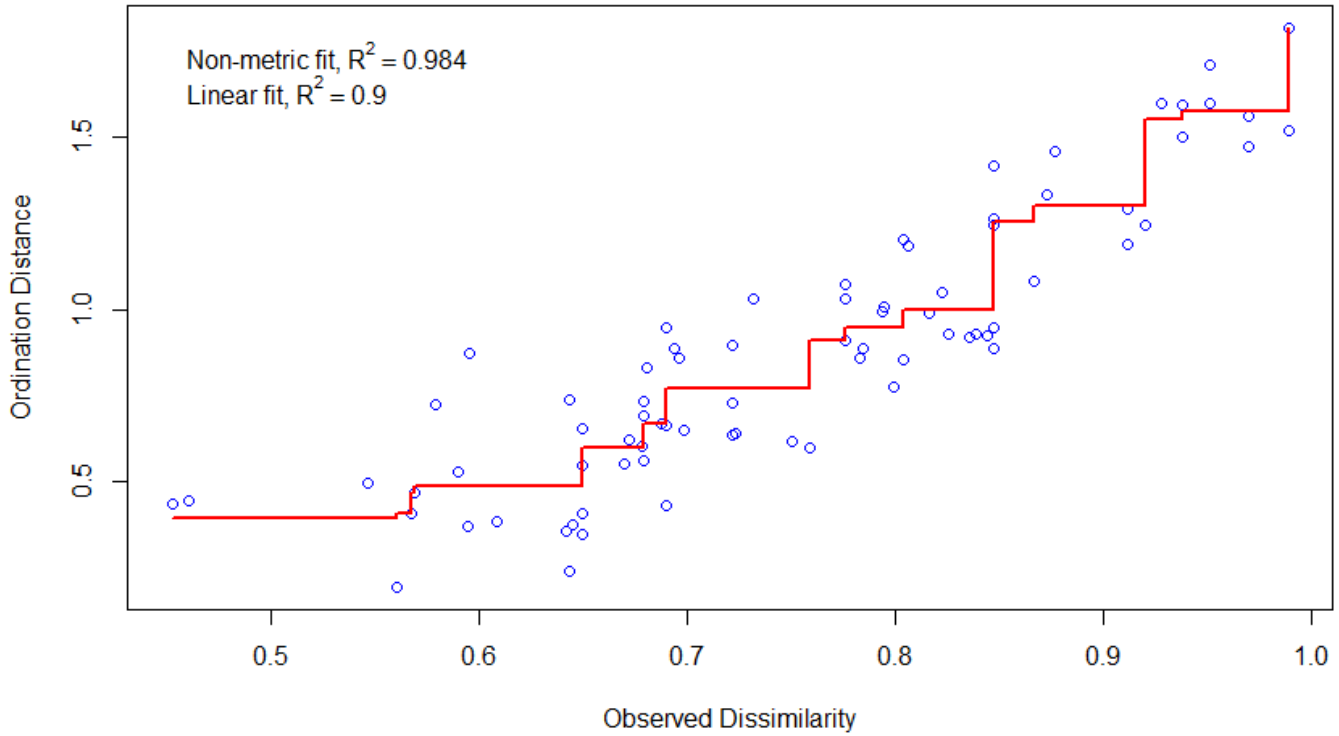
Appendices

Appendix A. The recorded parameters and how they were inputted into the GPS-7X. Further information of data collection and the information type listed throughout the methodology. Radio Buttons is a menu with multiple fixed values or expressions

| Features | Parameters | Information Type |
|-----------------------|-----------------------------|-------------------------|
| Tree | Location | Radio Buttons |
| | Tree Species | Picklist |
| | Tree Type | Picklist |
| | Diameter (DBH) | Numerical (Decimal) |
| | Tree Form | Radio Buttons |
| | Microhabitats | Numerical |
| | Fungal Species | Text |
| | Fungi Score | Radio Buttons |
| | Epiphyte Species | Text |
| | Epiphyte Score | Radio Buttons |
| | Invertebrates (Hand Search) | Text |
| | Invertebrate Score | Radio Buttons |
| | Tree Distance | Numerical |
| | Environment | Weather |
| Light Intensity (LUX) | | Numerical |
| Temperature | | Numerical |

where one value can be selected like the location Beaumont Park.

Appendix B. Stress plot and values used for the Nonmetric Multidimensional Scaling ordination plot (Figure 2). Stress value= 0.1247354 indicates a good representation of reduced dimensions. There is a good non-metric fit between observed dissimilarities.



Appendix C. Summarised raw data table including the variables used for data analysis.

| Tree Species | Tree Type | DBH | Number of tree cavities | Invertebrate species richness | Fungi species richness | Epiphyte species richness |
|---------------------|------------------|------------|--------------------------------|--------------------------------------|-------------------------------|----------------------------------|
| Turkey Oak | Mature | 1.0 | 0 | 4 | 0 | 4 |
| Turkey Oak | Veteran | 1.0 | 1 | 2 | 0 | 3 |
| Turkey Oak | Mature | 0.9 | 0 | 0 | 0 | 3 |
| Common Beech | Veteran | 1.0 | 1 | 1 | 1 | 3 |
| Turkey Oak | Mature | 0.9 | 0 | 1 | 0 | 2 |
| Turkey Oak | Veteran | 1.2 | 1 | 4 | 1 | 3 |
| Common Beech | Veteran | 1.3 | 2 | 2 | 0 | 5 |
| Common Beech | Mature | 0.9 | 0 | 5 | 1 | 3 |
| Pedunculate Oak | Ancient | 1.9 | 5 | 5 | 2 | 7 |
| Pedunculate Oak | Mature | 0.4 | 0 | 0 | 1 | 3 |
| Common Beech | Mature | 1.2 | 0 | 3 | 1 | 3 |
| Pedunculate Oak | Veteran | 1.5 | 4 | 3 | 2 | 3 |
| Pedunculate Oak | Veteran | 1.4 | 1 | 1 | 2 | 2 |