

2017

# An investigation into the response of a modular pontoon system to wave loading

Gathergood, G.

Gathergood, G. (2017) 'An investigation into the response of a modular pontoon system to wave loading', The Plymouth Student Scientist, 10(1), p. 239-280.

<http://hdl.handle.net/10026.1/14145>

---

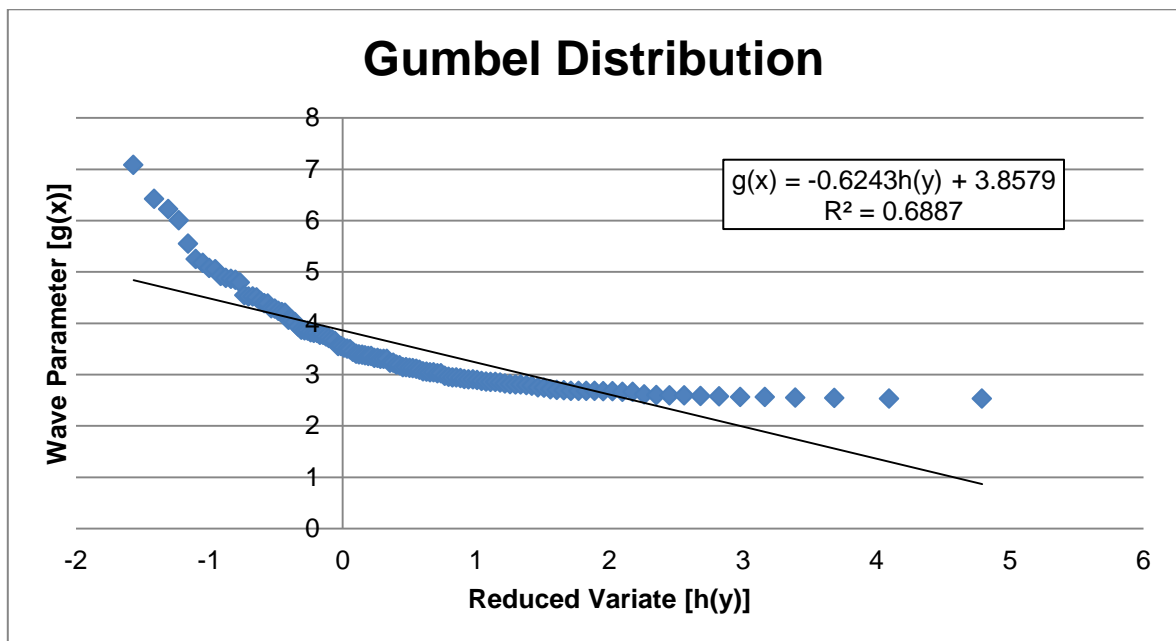
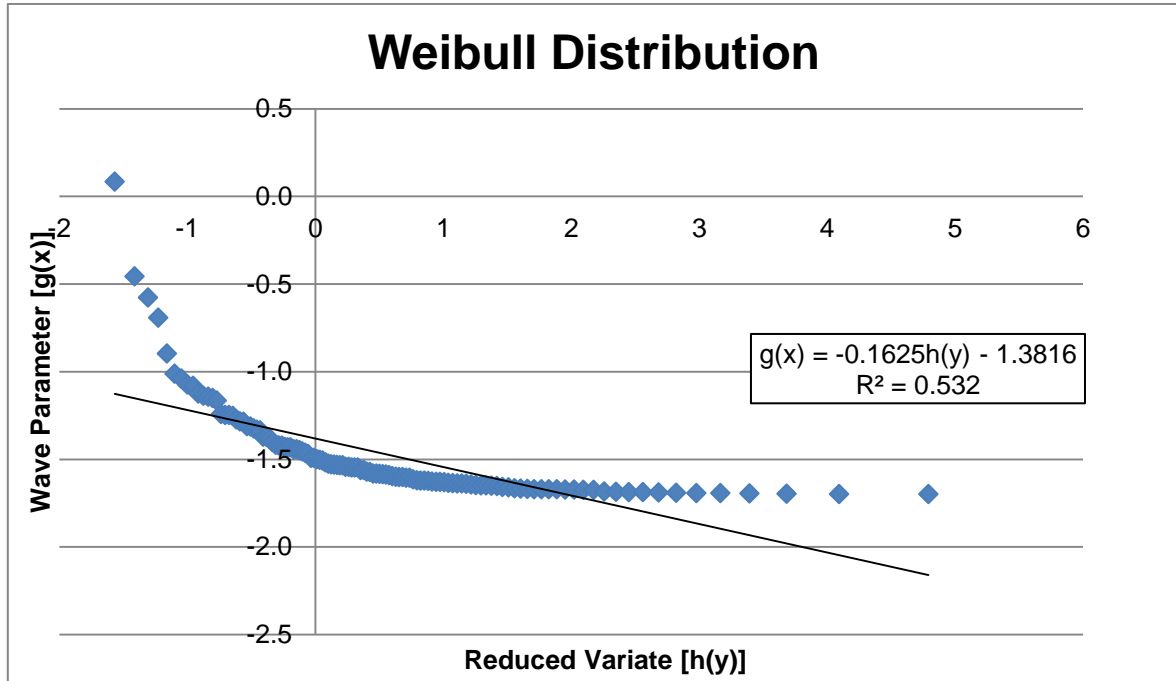
The Plymouth Student Scientist  
University of Plymouth

---

*All content in PEARL is protected by copyright law. Author manuscripts are made available in accordance with publisher policies. Please cite only the published version using the details provided on the item record or document. In the absence of an open licence (e.g. Creative Commons), permissions for further reuse of content should be sought from the publisher or author.*

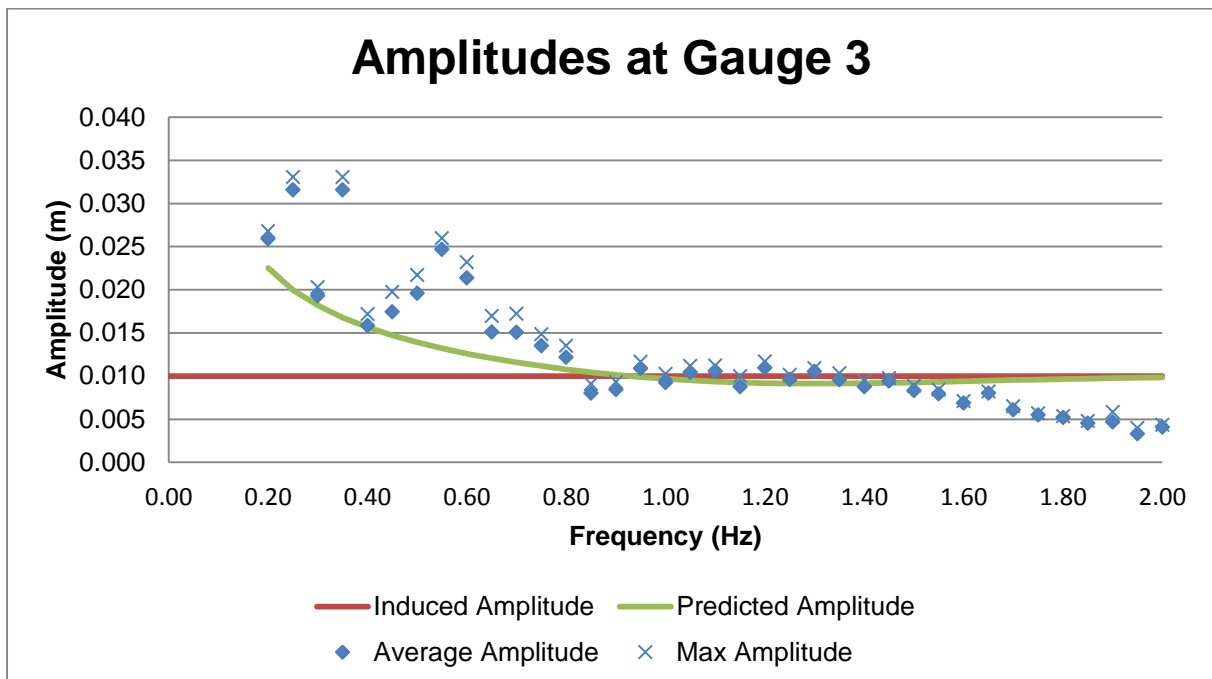
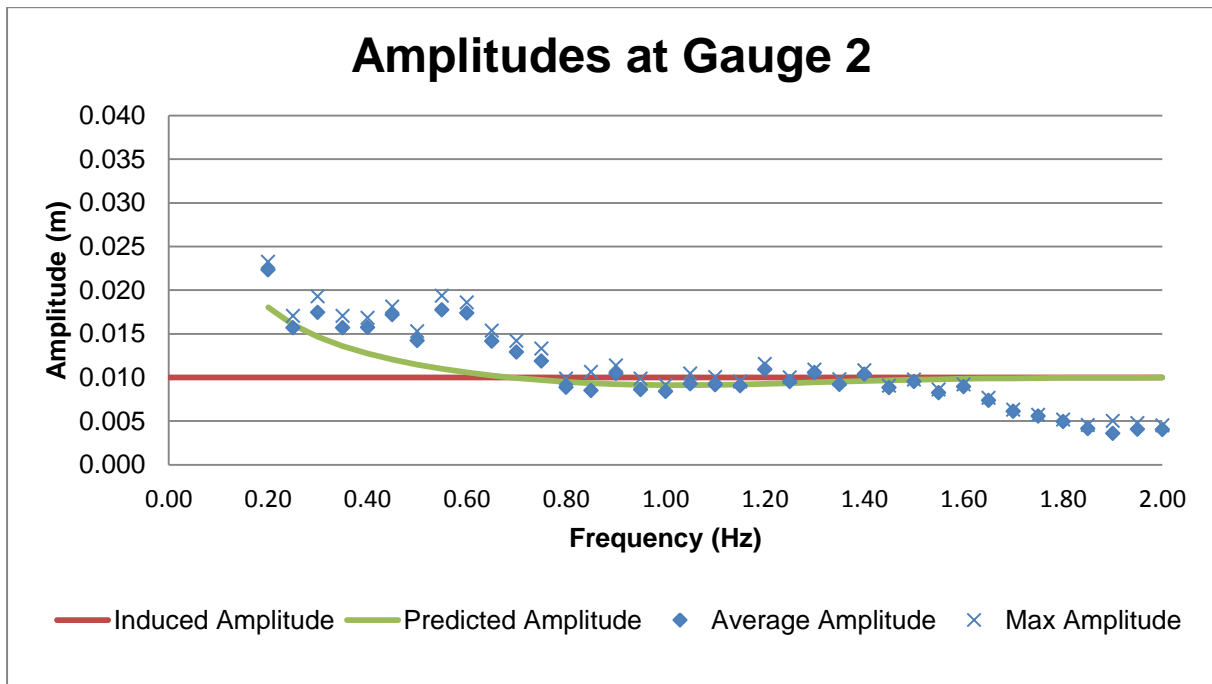
# Appendices

## Appendix A – POT Data Distributions

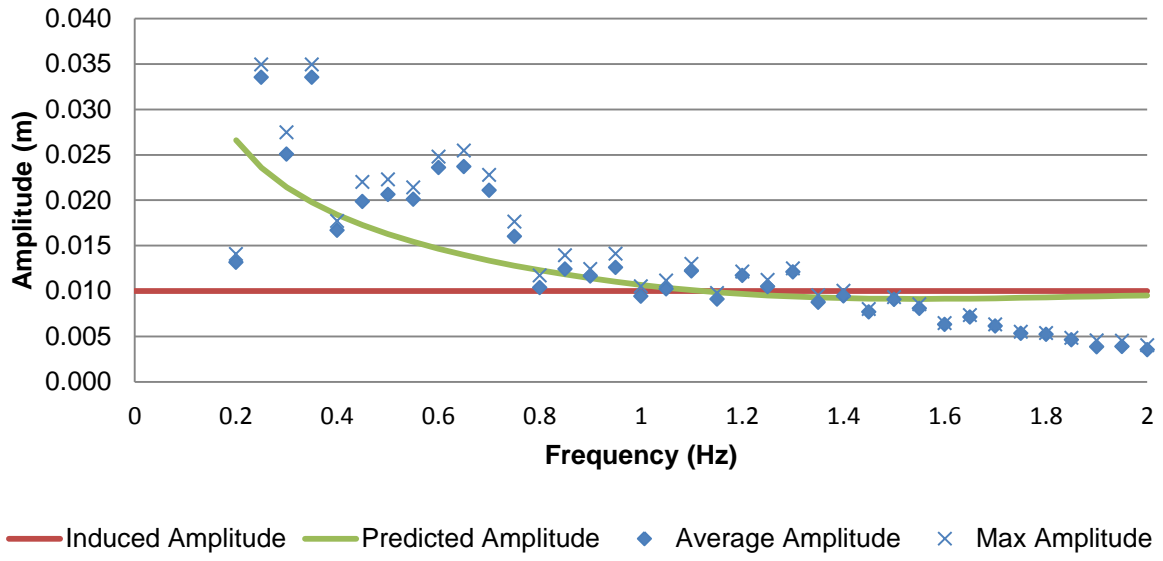


## Appendix B

### 1.1.1 Wave Gauge Data – 0.01m Amplitude

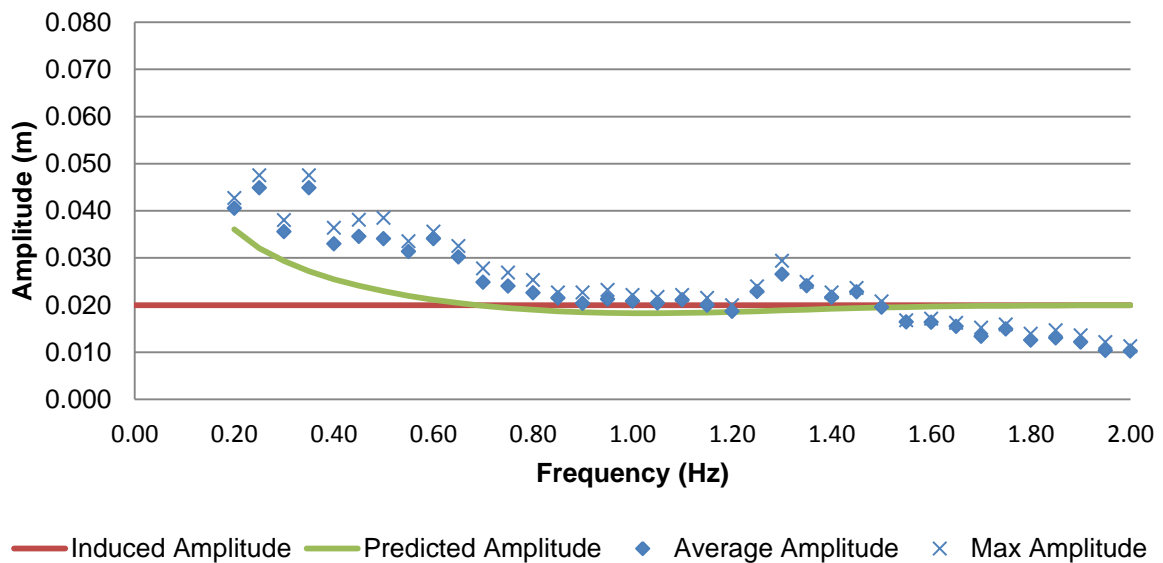


### Amplitudes at Gauge 4

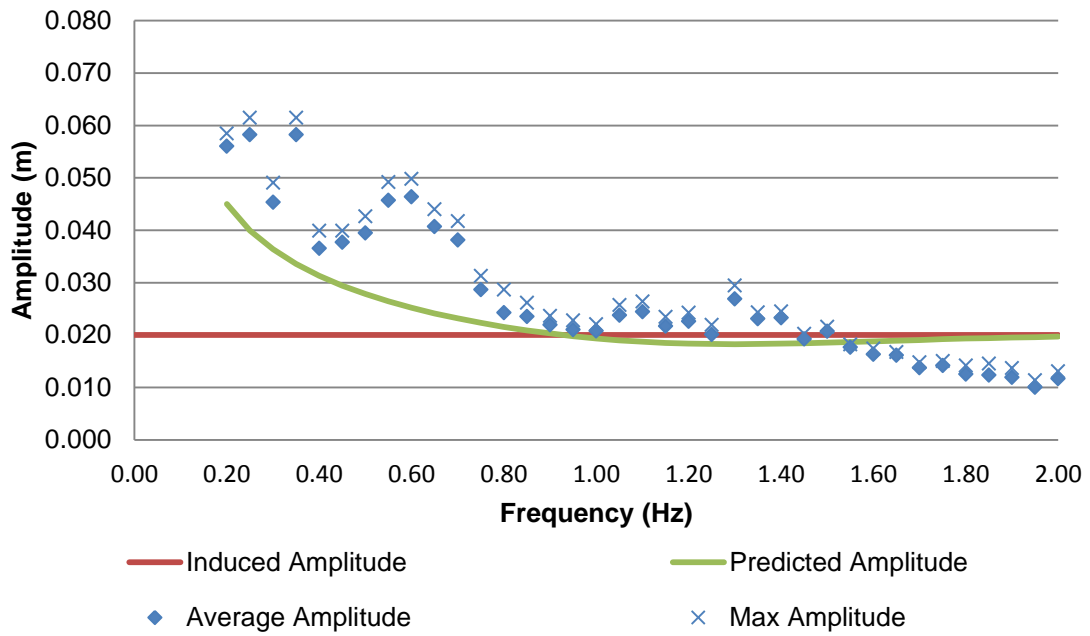


Wave Gauge Data – 0.02m Amplitude

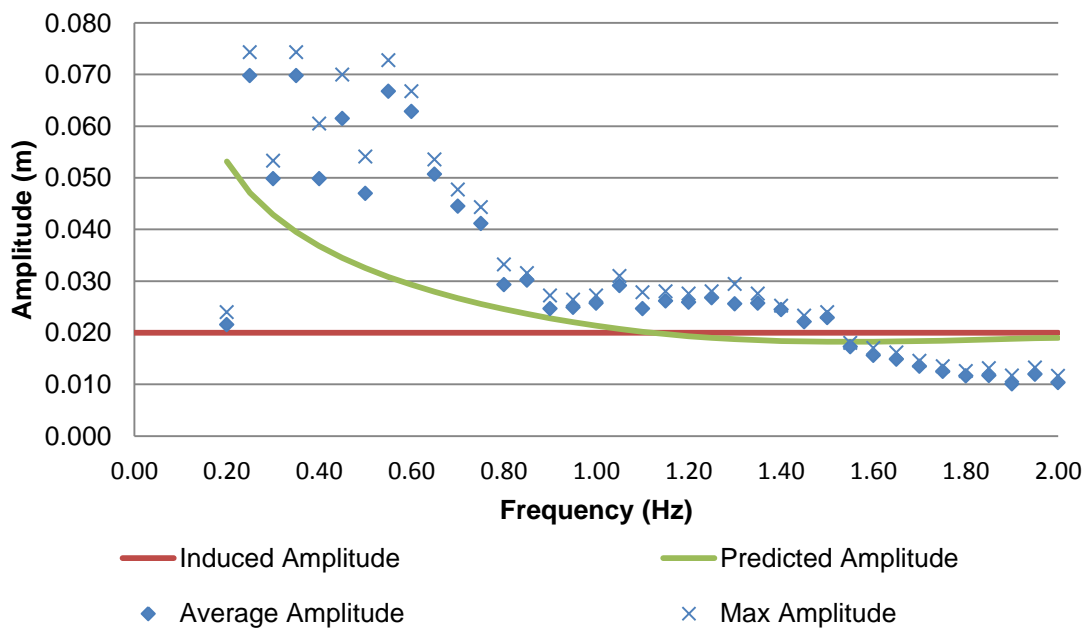
### Amplitudes at Gauge 2



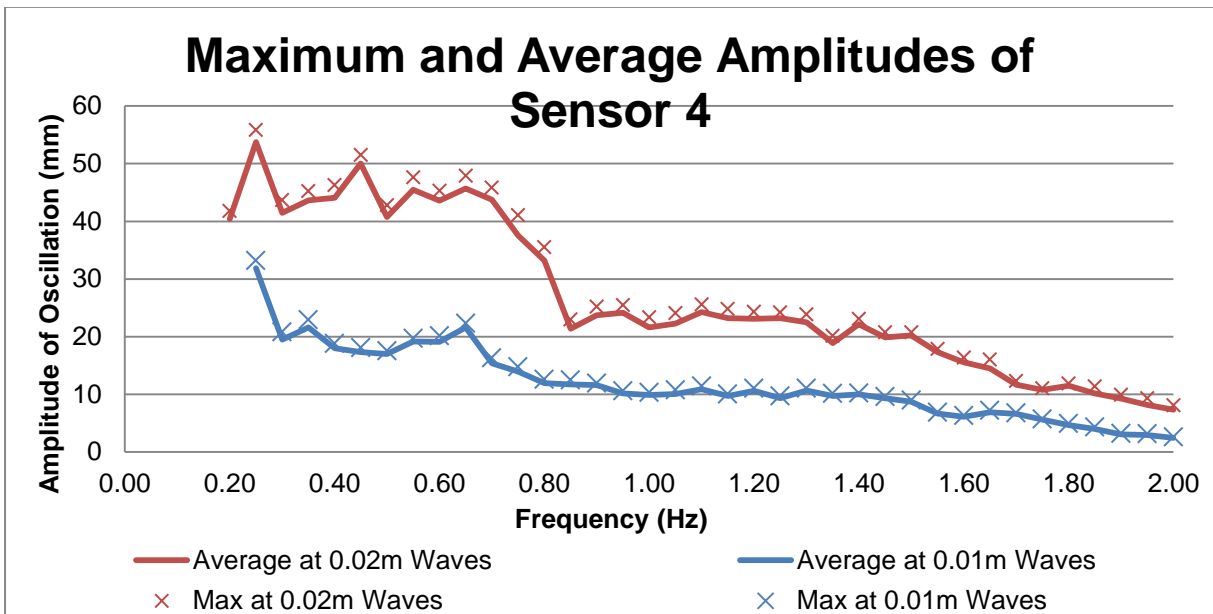
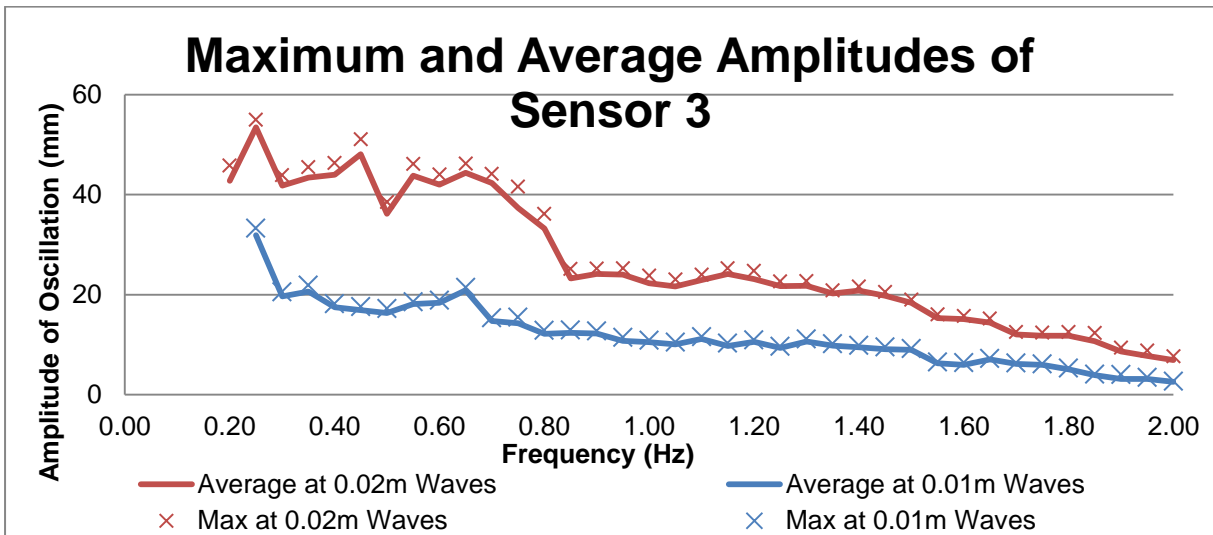
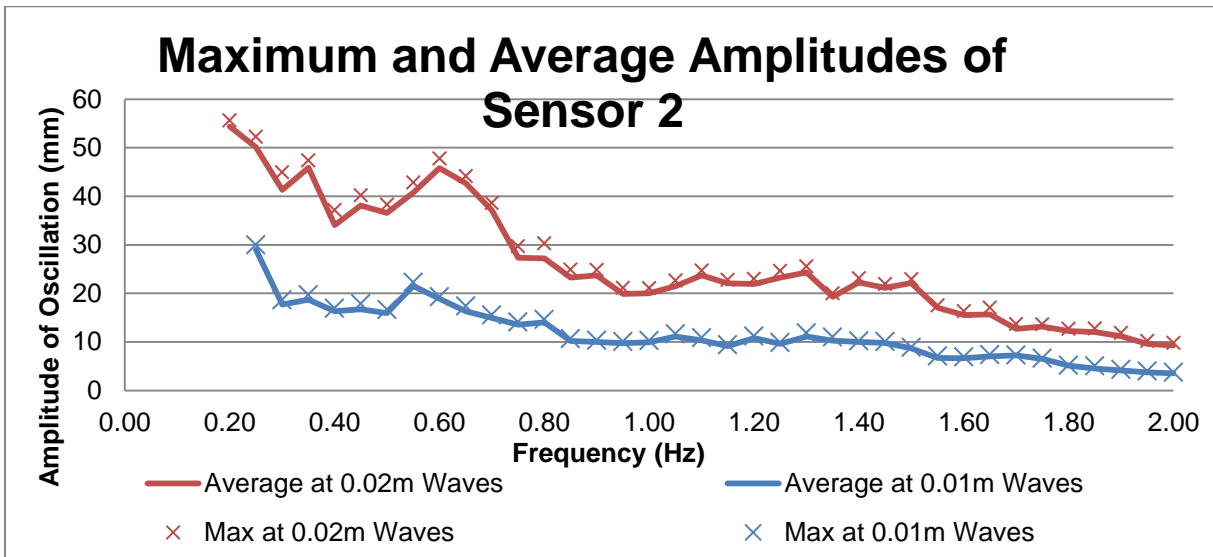
### Amplitudes at Gauge 3



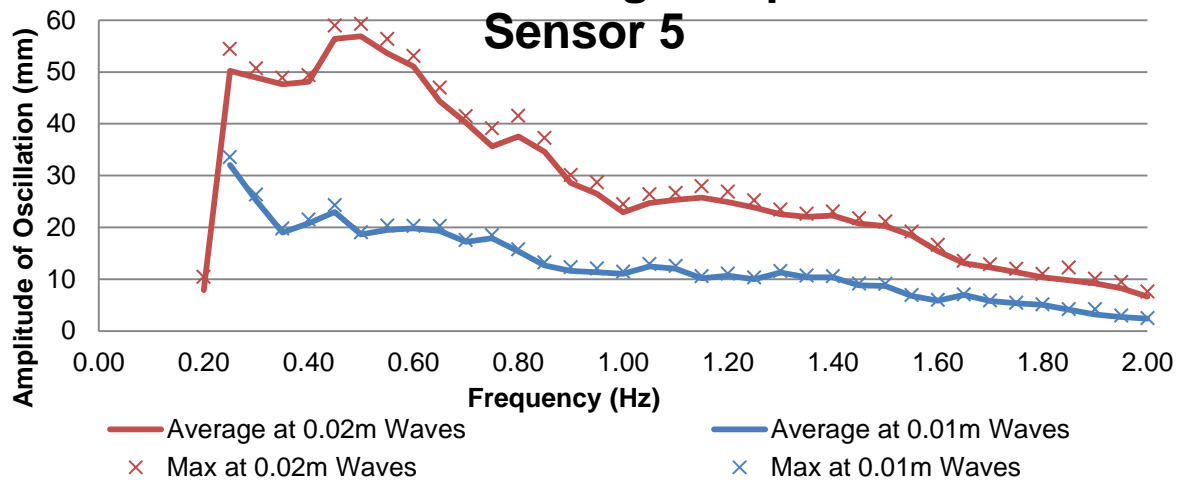
### Amplitudes at Gauge 4



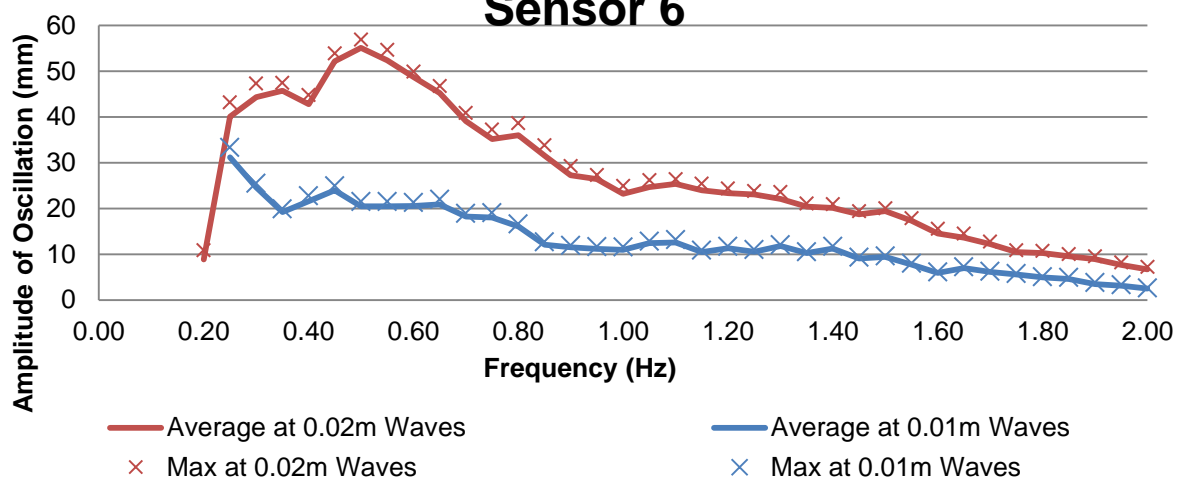
**Appendix C – Pontoon Maximum and Average Amplitudes**



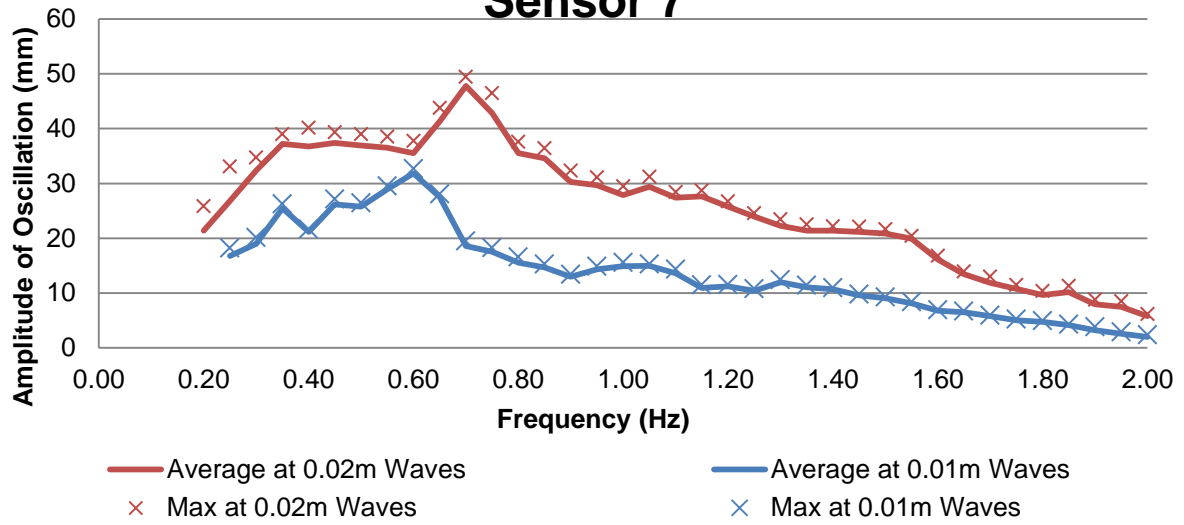
### Maximum and Average Amplitudes of Sensor 5



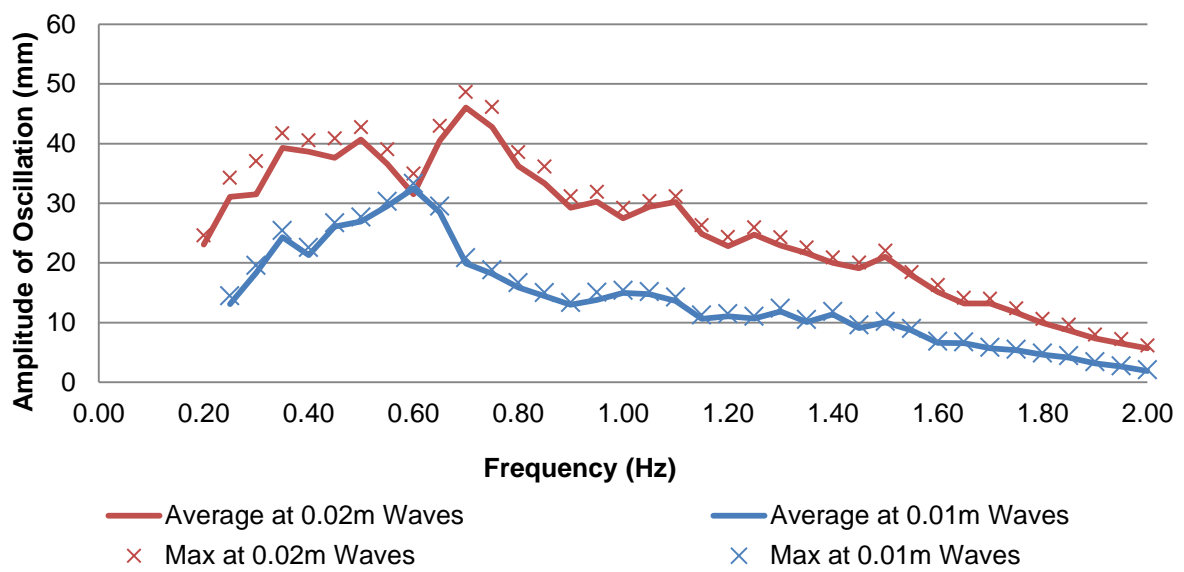
### Maximum and Average Amplitudes of Sensor 6



### Maximum and Average Amplitudes of Sensor 7

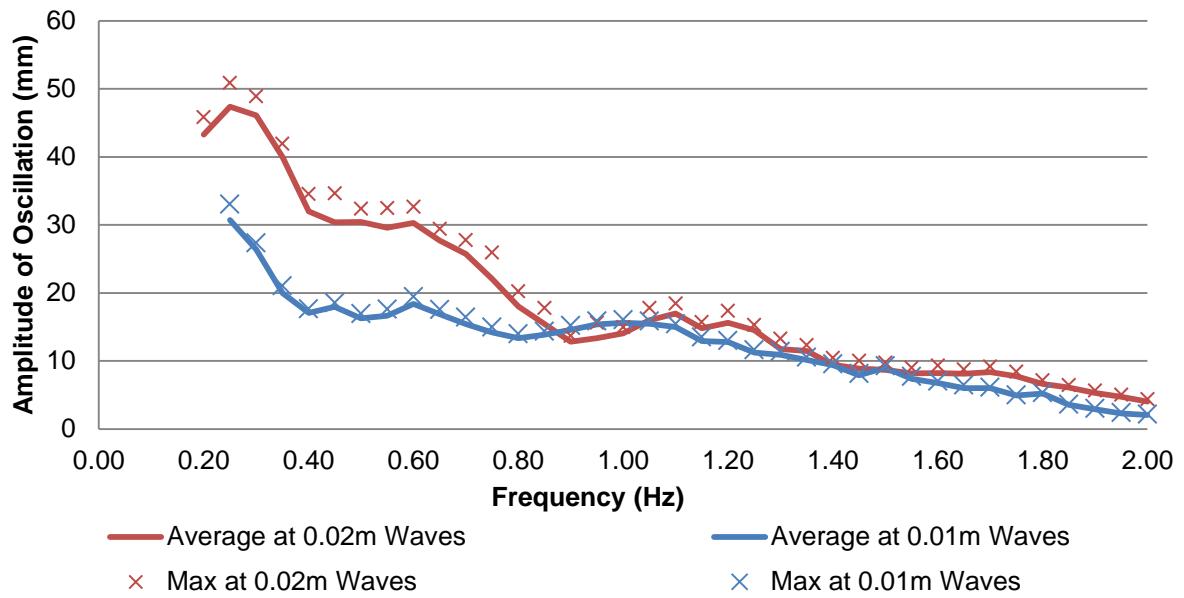


### Maximum and Average Amplitudes of Sensor 8

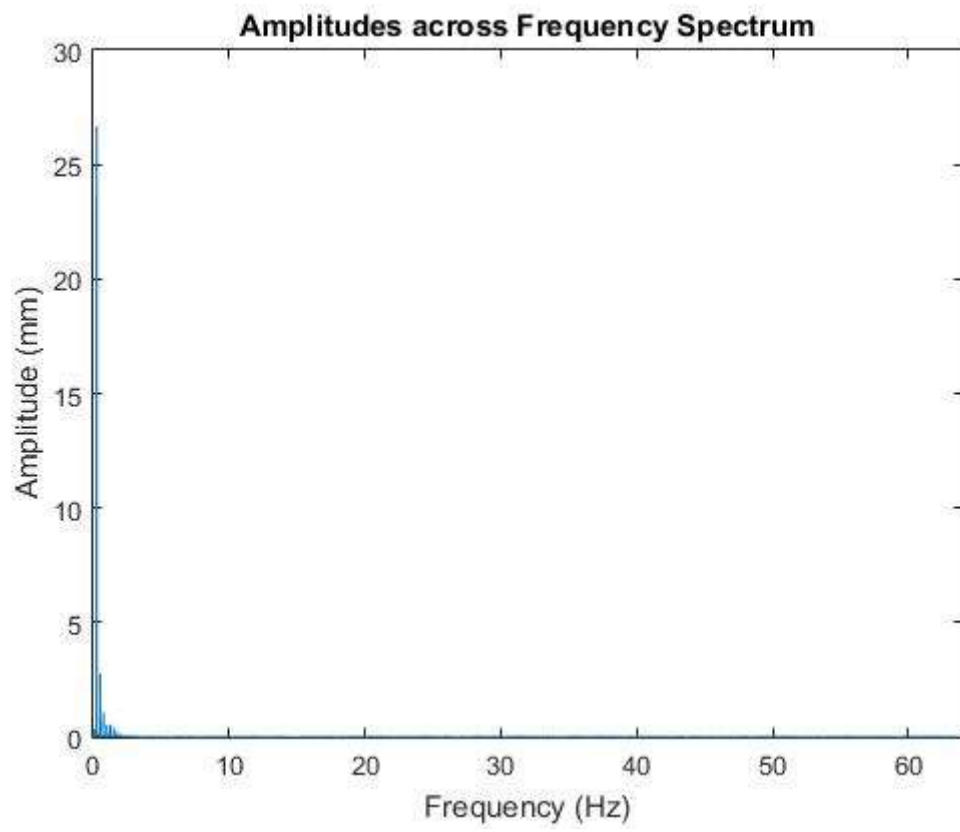




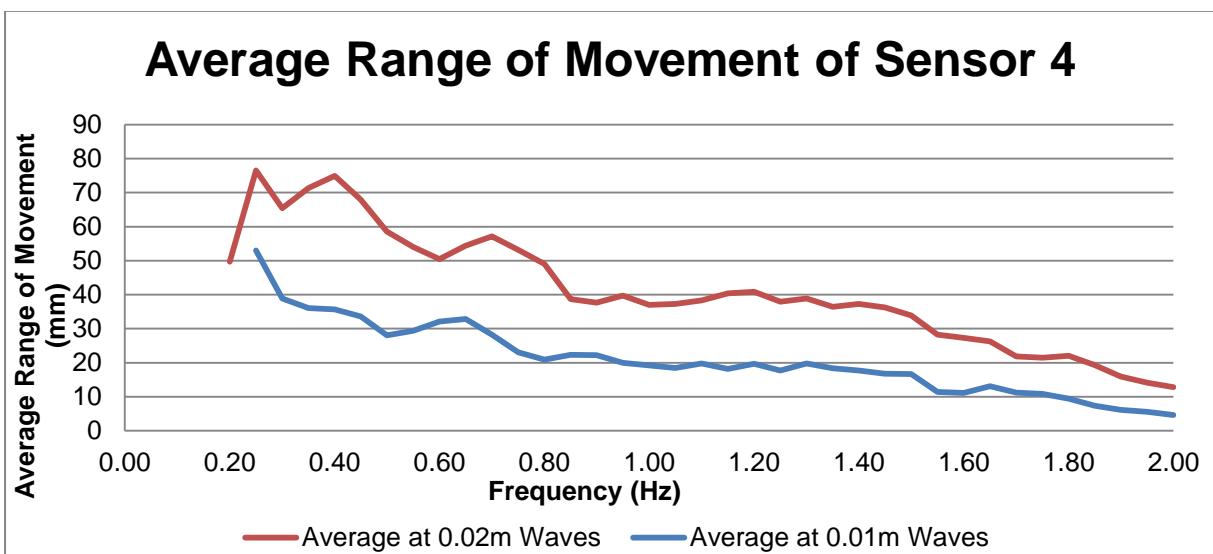
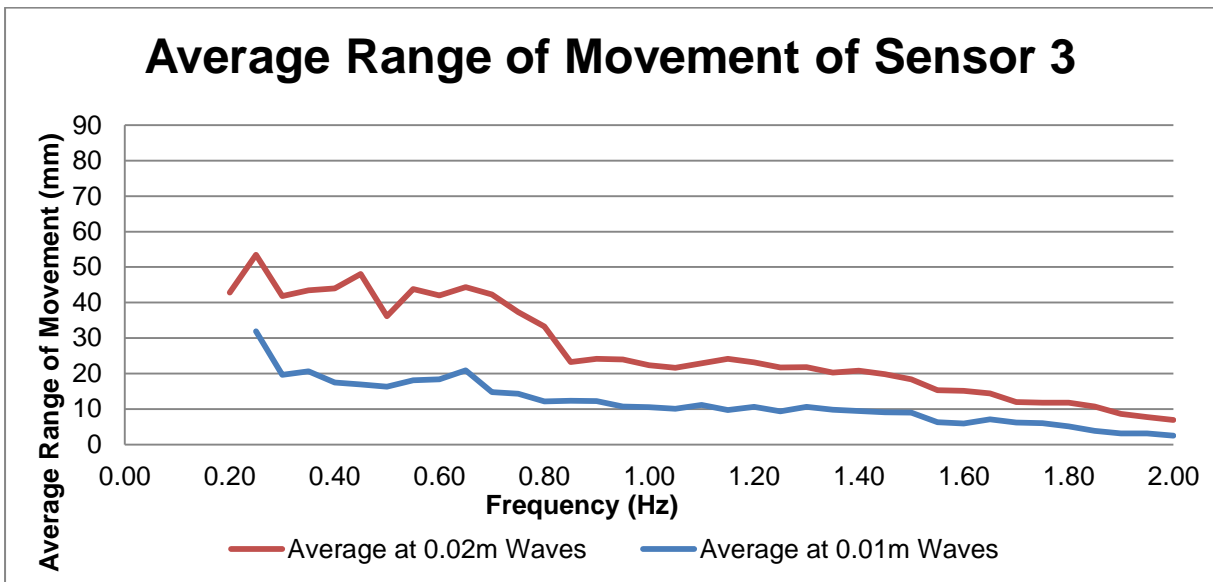
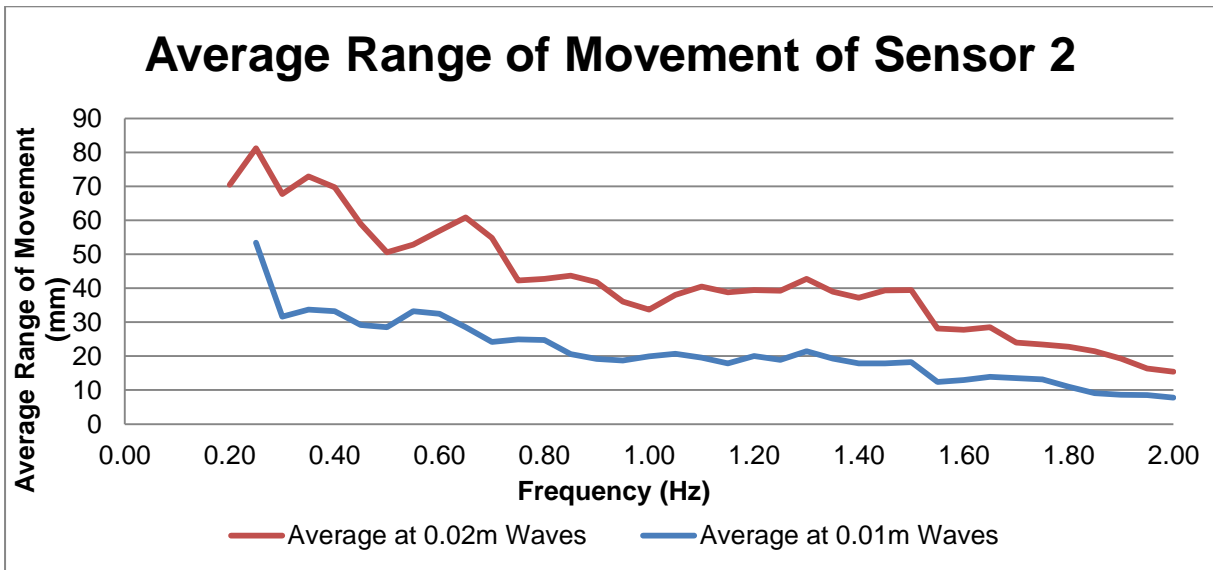
## Maximum and Average Amplitudes of Sensor 10



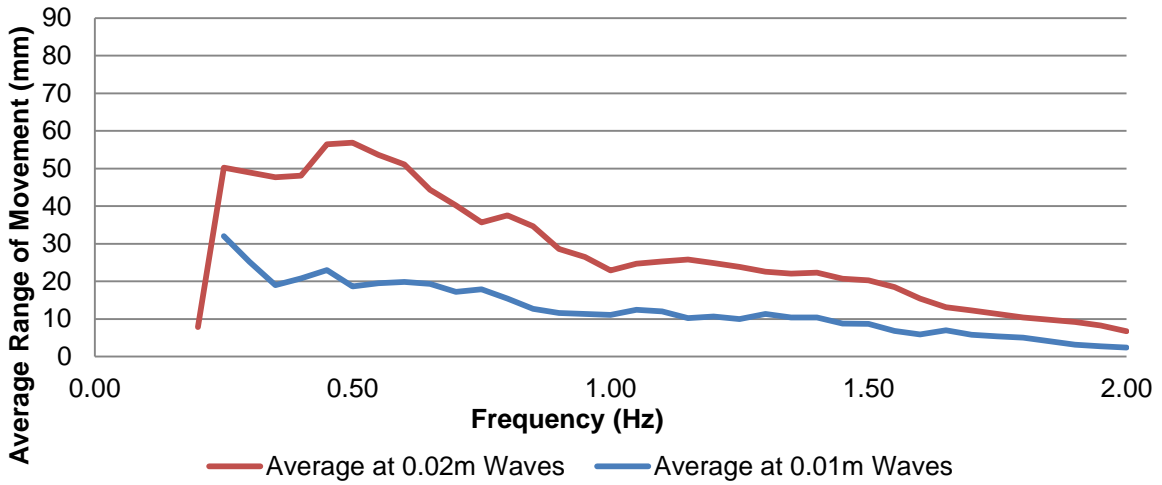
## Appendix D – FFT Output



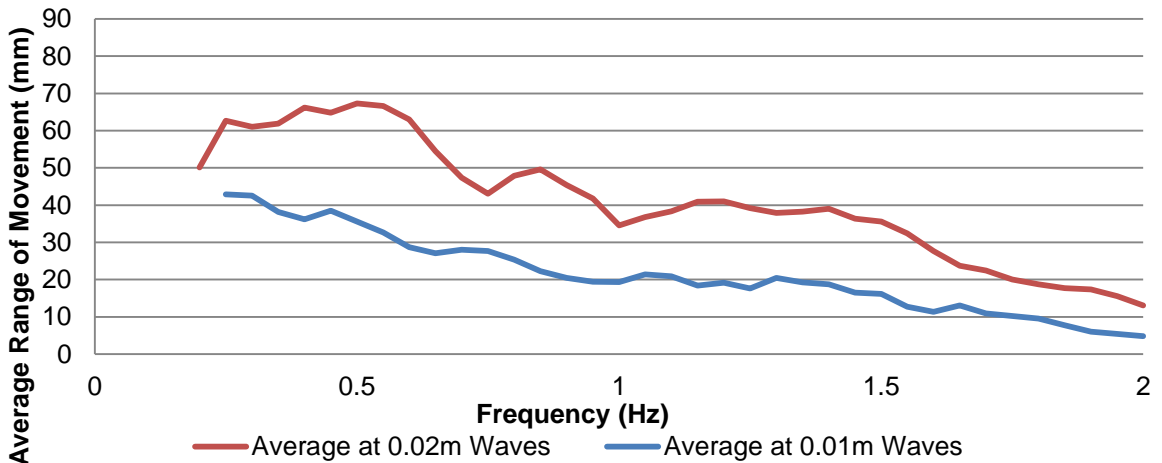
## Appendix E – Pontoon Average Movement Range



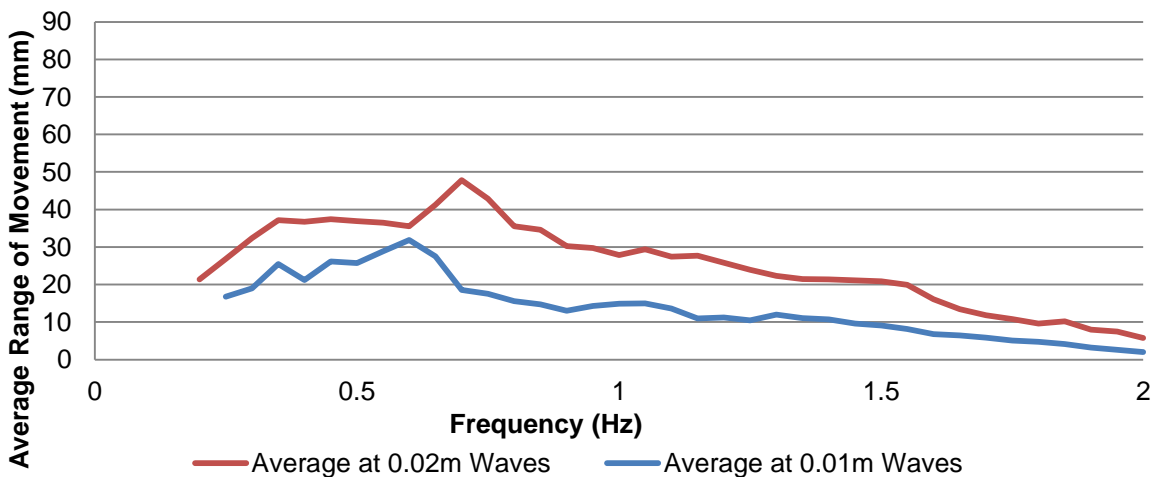
### Average Range of Movement of Sensor 5



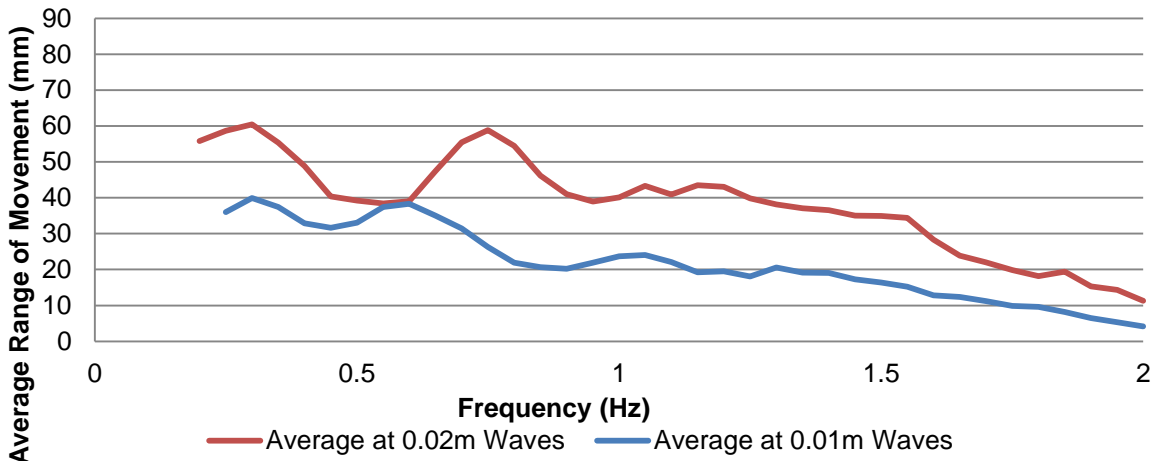
### Average Range of Movement of Sensor 6



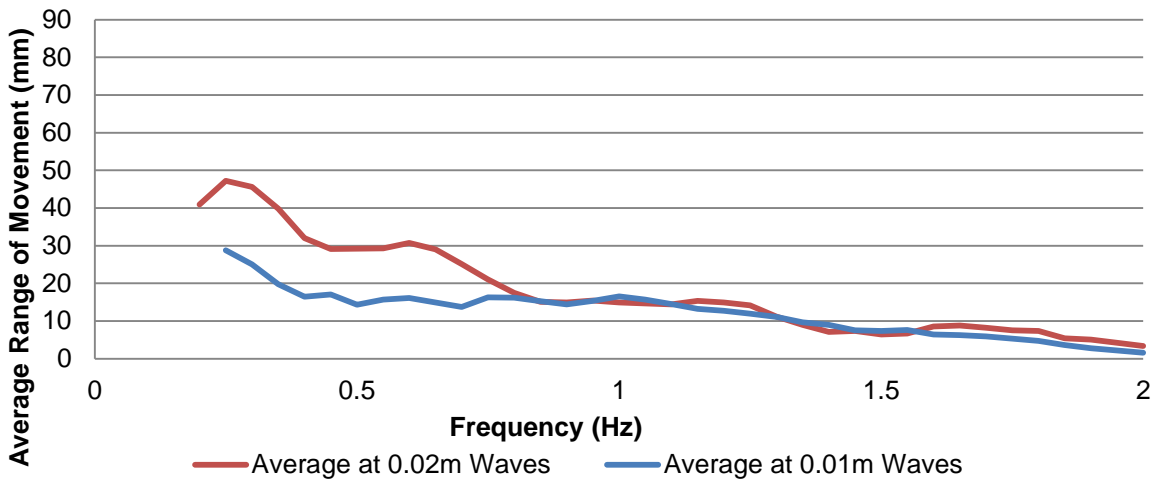
### Average Range of Movement of Sensor 7



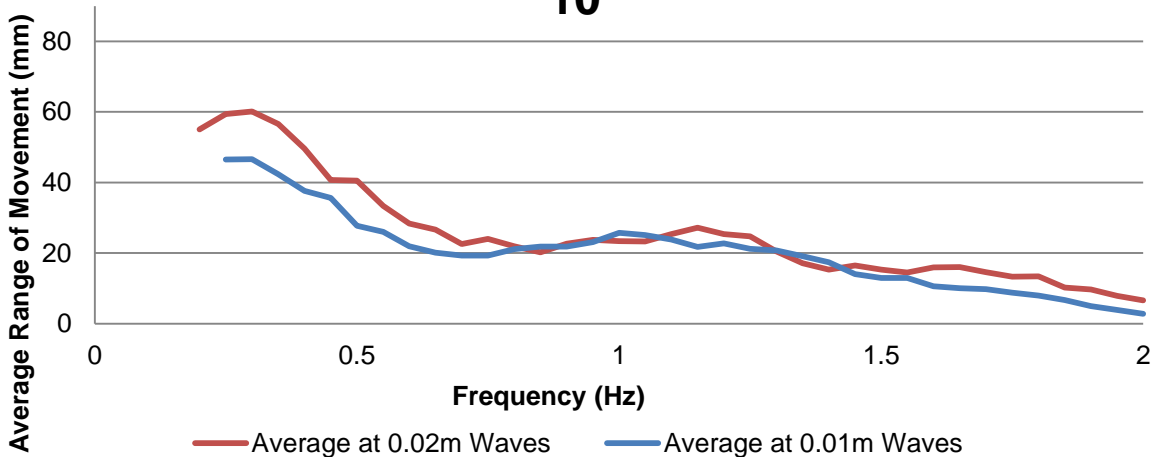
### Average Range of Movement of Sensor 8



### Average Range of Movement of Sensor 9



### Average Range of Movement of Sensor 10



## Appendix F – Repeats

### 1.1.2 Wave Gauge Data

Wave Run	Average Amplitude at 1.5Hz (mm)			
	Gauge 1	Gauge 2	Gauge 3	Gauge 4
1	8.690	9.555	8.307	9.076
2	7.885	9.114	8.149	8.954
3	8.267	9.425	8.288	9.265

Wave Run	Average Amplitude at 2.0Hz (mm)			
	Gauge 1	Gauge 2	Gauge 3	Gauge 4
1	4.721	4.031	4.075	3.539
2	4.095	3.948	3.686	2.974
3	4.288	3.867	4.146	3.369

Wave Run	Maximum Amplitude at 1.5Hz (mm)			
	Gauge 1	Gauge 2	Gauge 3	Gauge 4
1	9.012	9.749	8.858	9.319
2	8.129	9.413	8.536	9.276
3	8.499	9.711	8.577	9.533

Wave Run	Maximum Amplitude at 2.0Hz (mm)			
	Gauge 1	Gauge 2	Gauge 3	Gauge 4
1	4.883	4.524	4.333	4.031
2	4.153	4.346	4.039	3.446
3	4.371	4.328	4.467	3.888

Wave Run	Average Movement Range at 1.5Hz (mm)			
	Gauge 1	Gauge 2	Gauge 3	Gauge 4
1	16.831	18.866	15.781	17.332
2	15.966	19.13	15.413	17.302
3	16.397	19.201	15.761	17.753

Wave Run	Average Movement Range at 2.0Hz (mm)			
	Gauge 1	Gauge 2	Gauge 3	Gauge 4
1	9.5124	8.5122	7.9838	7.7947
2	8.9587	8.7943	7.5409	6.5443
3	9.196	8.622	8.3992	7.3028

### 1.1.3 Qualisys Data

Sensor No.	Average Amplitude for Wave Run at 1.5Hz (mm)		
	1	2	3
1	9.609	9.280	9.308
2	8.668	8.858	8.653
3	8.979	8.813	8.989
4	8.715	8.245	8.278
5	8.673	8.276	8.325
6	9.403	9.507	9.417
7	9.081	8.930	8.755
8	10.024	9.932	9.840
9	7.400	7.389	7.126
10	9.023	7.963	8.029

Sensor No.	Average Amplitude for Wave Run at 2.0Hz (mm)		
	1	2	3
1	4.031	4.235	4.177
2	3.559	3.418	3.433
3	2.529	2.718	2.719
4	2.426	2.548	2.420
5	2.402	2.516	2.365
6	2.507	2.491	2.435
7	2.021	2.140	2.046
8	1.880	1.993	1.904
9	1.568	1.560	1.478
10	2.045	2.212	2.094

Sensor No.	Maximum Amplitude for Wave Run at 1.5Hz (mm)		
	1	2	3
1	9.873	9.598	9.473
2	8.894	9.070	8.888
3	9.203	9.198	9.186
4	8.961	8.525	8.450
5	9.088	8.650	8.721
6	9.613	9.812	9.715
7	9.291	9.295	9.011
8	10.176	10.173	10.051
9	7.802	7.651	7.356
10	9.269	8.111	8.135

Sensor No.	Maximum Amplitude for Wave Run at 2.0Hz (mm)		
	1	2	3
1	4.371	4.709	4.697
2	3.750	3.539	3.529
3	2.655	2.839	2.821
4	2.569	2.654	2.456
5	2.513	2.614	2.450
6	2.596	2.585	2.526
7	2.389	2.435	2.454
8	2.042	2.201	2.138
9	1.667	1.652	1.614
10	2.169	2.312	2.204

Sensor No.	Average Range for Wave Run at 1.5Hz (mm)		
	1	2	3
1	19.917	19.327	19.001
2	18.821	18.564	18.438
3	19.262	18.404	18.025
4	18.386	17.773	17.408
5	19.370	19.360	18.797
6	19.023	19.177	18.801
7	23.700	22.787	22.474
8	23.313	22.286	21.984
9	25.722	24.507	23.918
10	25.531	24.720	24.796

Sensor No.	Average Range for Wave Run at 2.0Hz (mm)		
	1	2	3
1	19.917	19.327	19.001
2	18.821	18.564	18.438
3	19.262	18.404	18.025
4	18.386	17.773	17.408
5	19.370	19.360	18.797
6	19.023	19.177	18.801
7	23.700	22.787	22.474
8	23.313	22.286	21.984
9	25.722	24.507	23.918
10	25.531	24.720	24.796

Wave Run	1.5Hz Frequency			
	Average Gradient	Average Slope	Maximum Gradient	Maximum Slope
1	0.0271	36.86	0.11621	8.60534
2	0.0261	38.32	0.11233	8.90267
3	0.0261	38.25	0.11323	8.83146

Wave Run	2.0Hz Frequency			
	Average Gradient	Average Slope	Maximum Gradient	Maximum Slope
1	0.0036	281.34	0.03292	30.3738
2	0.0038	265.77	0.03563	28.0684
3	0.0038	264.74	0.03701	27.0194



## Appendix G – Average Pontoon Slope with Standards

